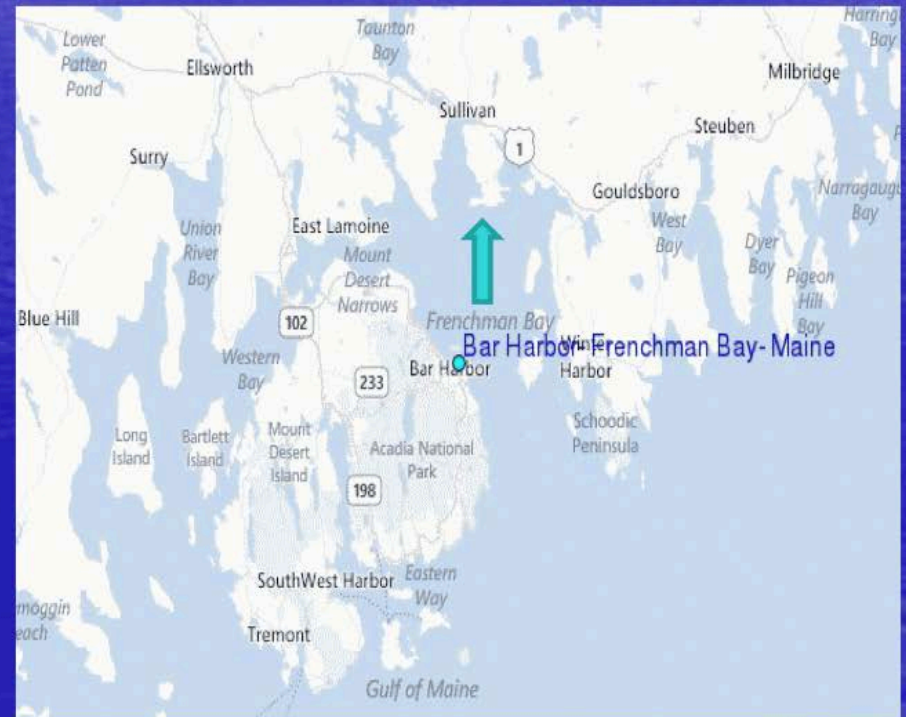
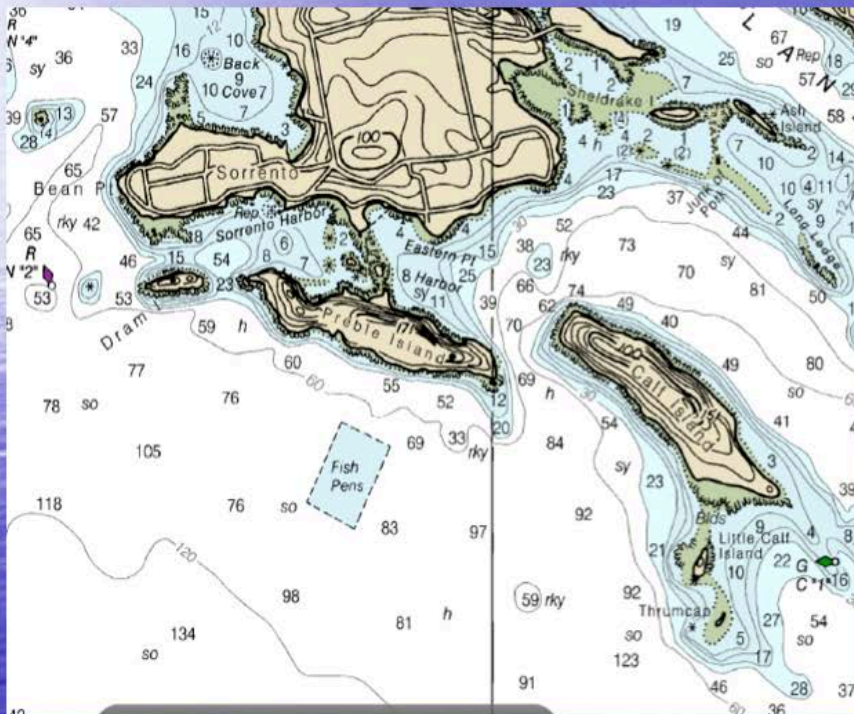


Sorrento Seaweed Lease Site



Seeding Starts at CCAR "cleanrooms"

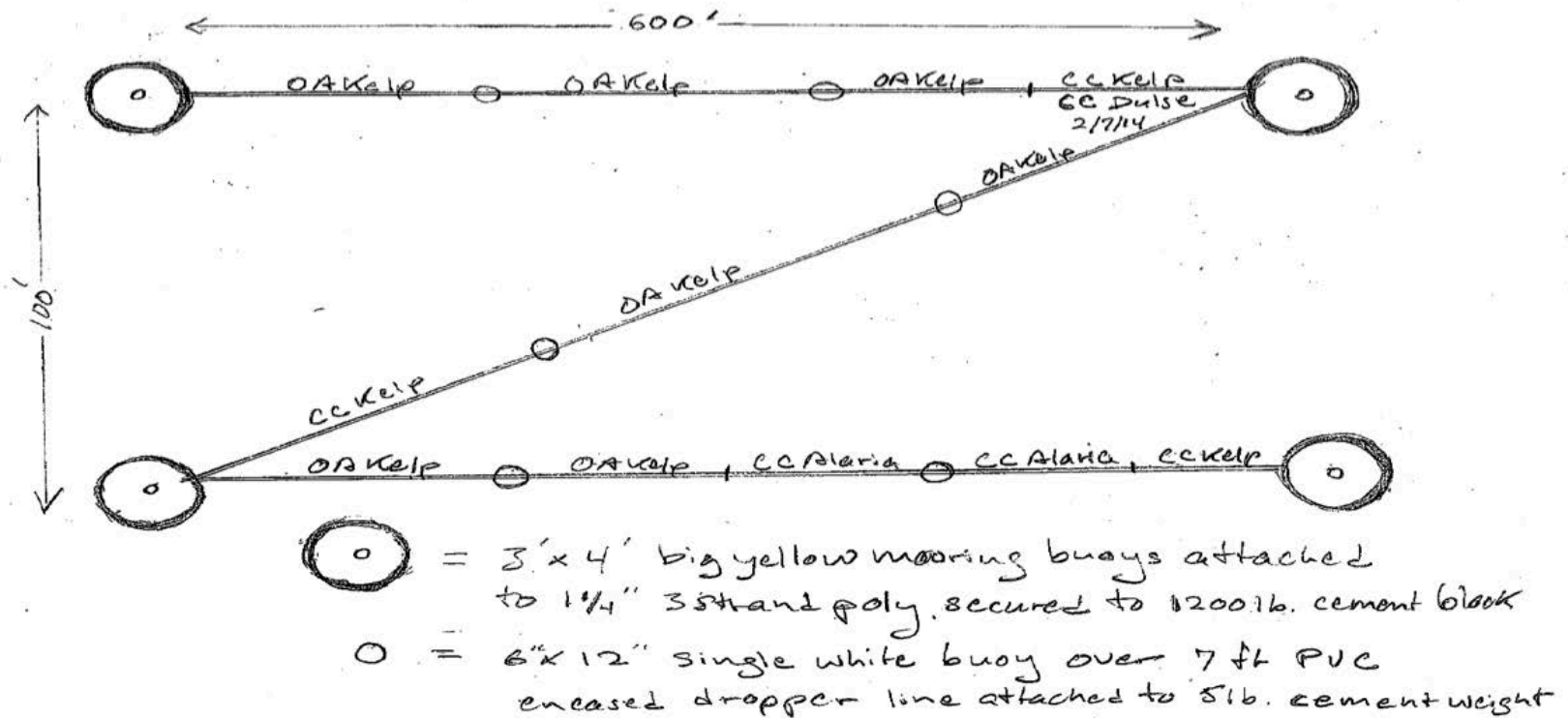


Seeding the ropes Dec. 21, 2013

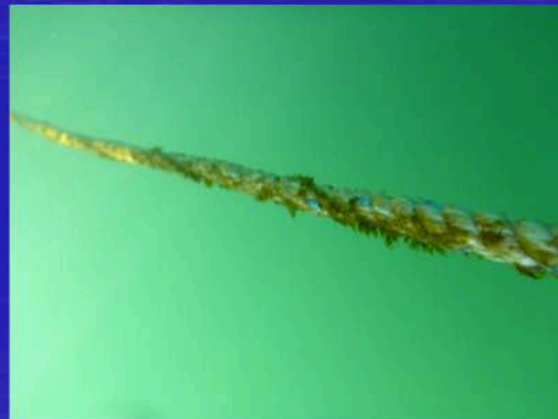
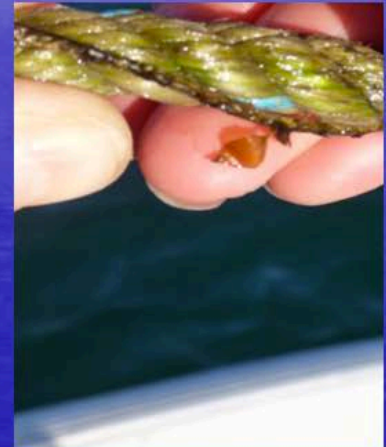
- Seeded twine unwinding from PVC spool as it moves down the rope.



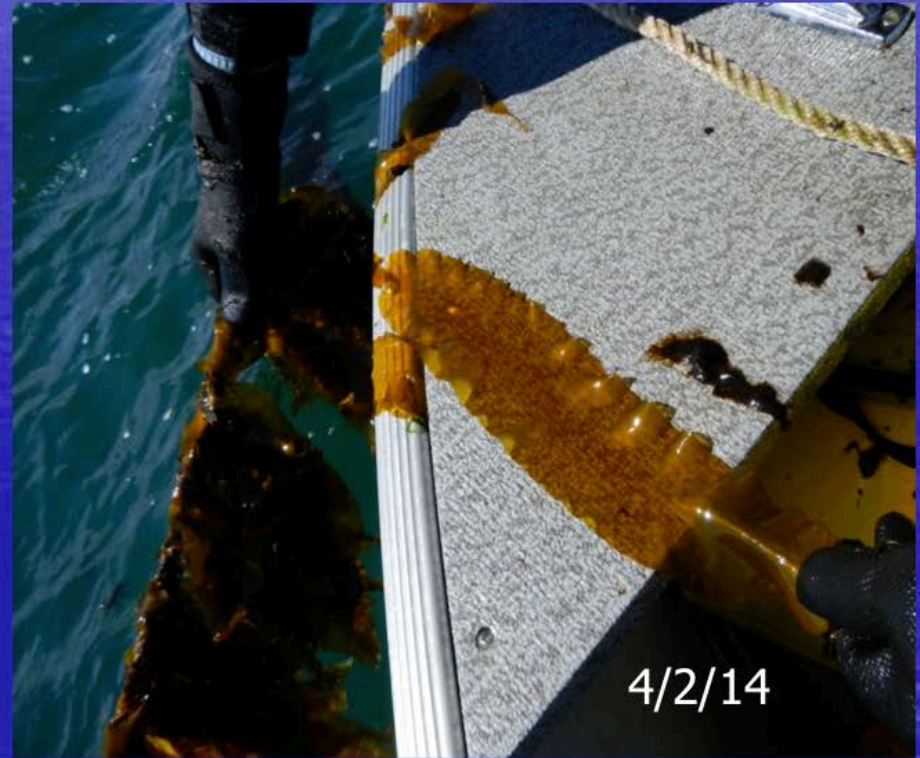
Simple Sorrento Farm Layout



Jan. 15, 2014 Are they growing? Yes!!



These species grow fastest in winter and early spring.



4/22/14 Mooring maintenance and some three foot kelp plants!



5/23/14 Kelp at it's prime. More mooring duty and doubling line buoys to hold increased biomass



6/3/14 Sarah hangs some kelp to dry, just over 6 months old



7/30/14 kelp is fouled but spores
for 2nd generation alaria are ready



August 12, 2014 Cutting away fouled plants to clean ropes for next season.



Total first season expenses for farm

| | |
|--|--------|
| 4 -1200 lb. cement mooring blocks | \$100 |
| 40 ft. ½ in. galvanized chain and shackles | 303 |
| 8 - 100 ft. 1.25 in. used 3 stand poly rope | NC |
| 6 – 3X4 ft. yellow mooring balls | NC |
| Trucking all above to Sorrento dock | 485 |
| Setting moorings: Greg Trundy, boat, helper | 320 |
| 1800 ft. used 3/8 lobster warp (OA) | NC |
| 12 seeded spools kelp, alaria, dulse (OA,CCAR) | NC |
| TOTAL | \$1208 |
| Total first season income | \$ 0 |

First season lessons learned!

- Pick good partners (CCAR, OA, SG, UMO)
- Cultivate local relationships (James, Greg)
- Check gear frequently, depending on exposure
- Thin plants at various stages of growth
- Add more buoys as biomass increases
- Experiment with various depths as plants grow
- Monitor biofouling closely, harvest early
- Or develop multiple markets for early, mid and late harvests

Brought to you by the friendly folks at Maine Coast Sea Vegetables

