

An aerial satellite photograph of a coastal region, likely in Mexico. The image shows a complex network of waterways, including a large bay and several smaller inlets, surrounded by dense green vegetation. A yellow star is placed on the land near the top center of the image, marking a specific location. The text is overlaid on the left side of the image.

Municipal Resource Management

“Adaptation to Changing Coastal
Environments”

Town of
Brunswick

Mexico





Goals of the Discussion

- **Present-** Drastic declines in softshell clam populations; Quickly rescinding salt marshes; Catastrophic loss of eel grass meadows.
- **Adaptation** – Feasibility of stabilizing Crab Populations in smaller control areas; Rebuilding damaged habitat; Reseeding softshell clam populations; Nurture returning populations of quahogs/oysters etc...
- **Future Planning-** Softshell clam pens (aquaculture); Harvest diversification (various shellfish types); Bank stabilization; eel grass reintroduction;

Eelgrass Impacts

**Before
2001**



Now



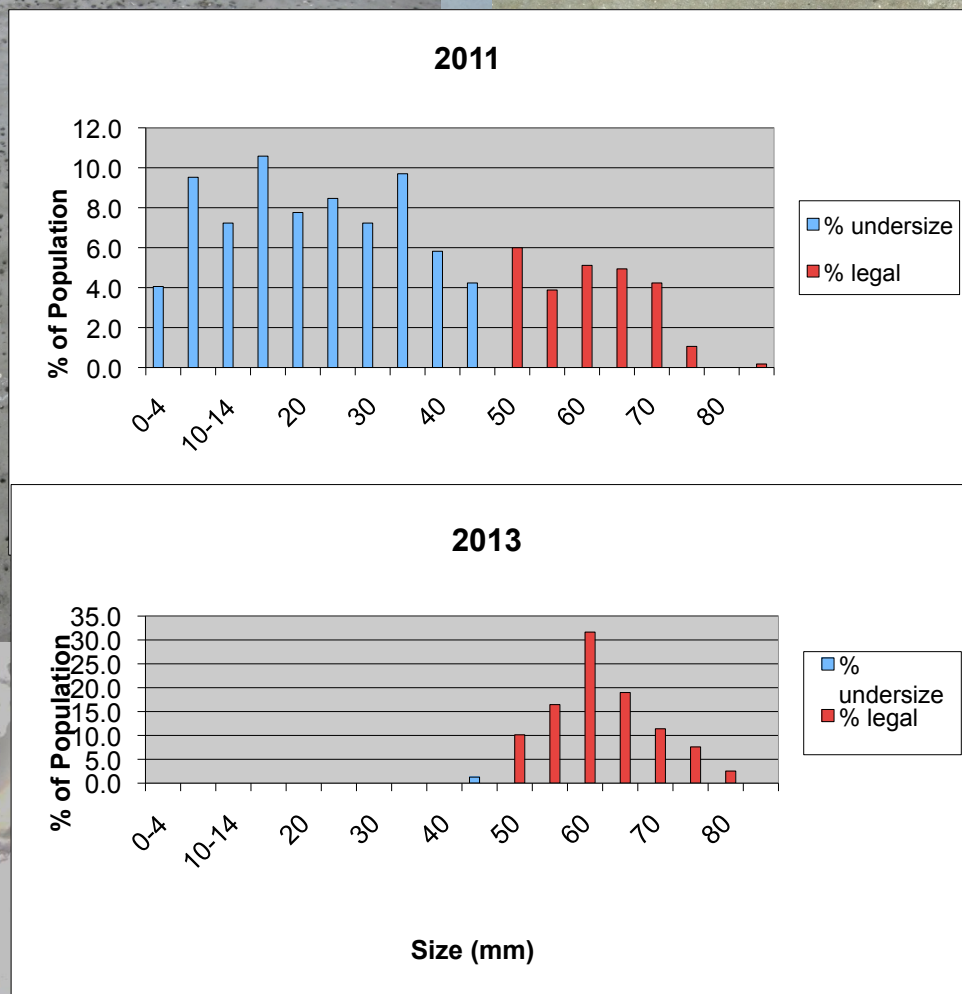
Saltmarsh Impacts



Shoreline Erosion



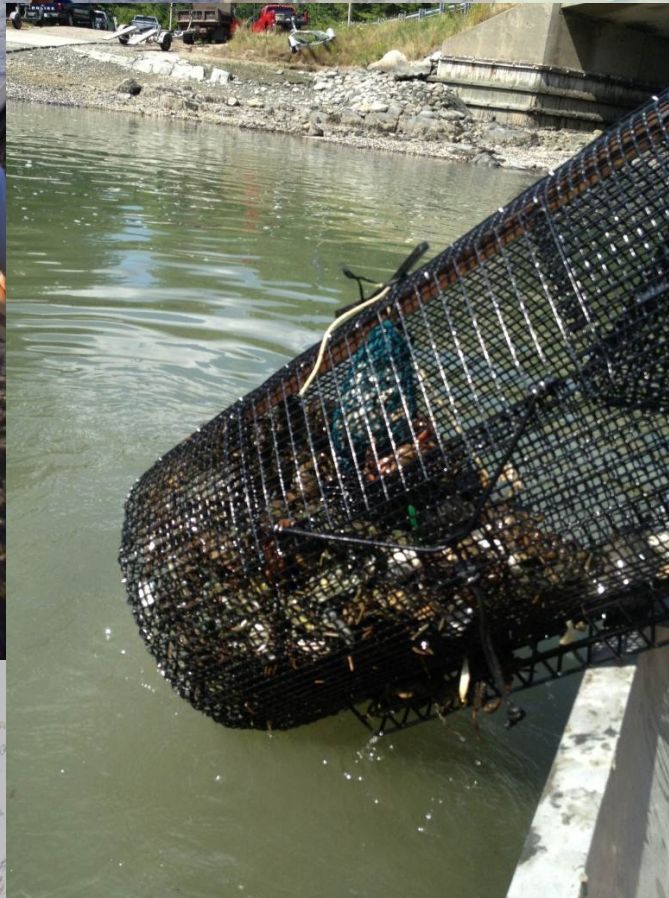
Shellfish Impacts



Species changes



Adaptation



Adaptation



The Future

Reclaiming Near Shore Coastal Habitat in the face of global climate change:

Identify

- Historical Information – Studies conducted in other regions of the world- Our recent changes in the near shore coastal eco-system.

Stabilize Near Shore Habitats

- Small Protected Coves- Is it possible (MCP Grant)

Future planning

- Near Shore Habitat Restoration
- Diversify Harvesting Options (BDC Grant)
- Build Regional Partnerships

This Invasive Species Is EVERYONES PROBLEM!!!!

THANK YOU
TO



Brunswick Development Corporation



Brunswick High School



**New Meadows River
Watershed Partnership**



MER ASSESSMENT CORPORATION