

A large group of salmon swimming in clear, blue water. The fish are densely packed, and their silvery scales catch the light, creating a shimmering effect. The water is a deep, clear blue, and the overall scene is dynamic and natural.

Extension Activities Regarding Fish Health Issues in Aquaculture

by

Christopher Bartlett

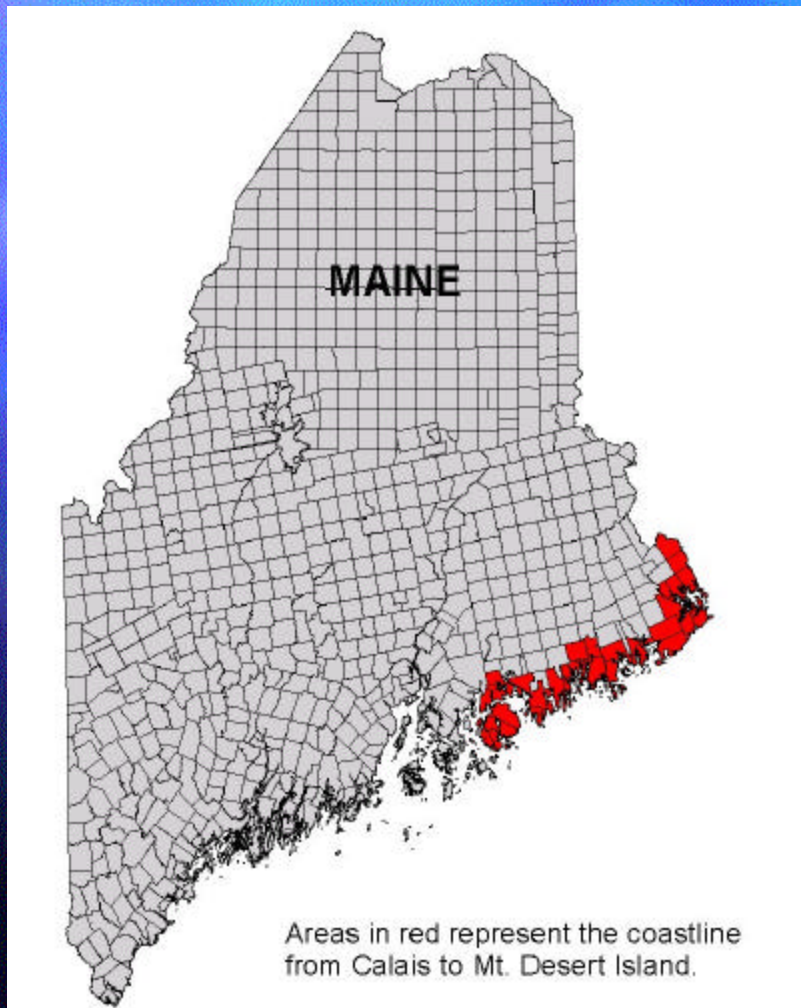
University of Maine Sea Grant and
Cooperative Extension Programs

Finfish Health Extension Topics

- General Activities
- Sea Lice IPMP
- Fish Health Workshop



Maine Salmon Aquaculture Industry Overview



- 36 Million Pounds Harvested in 2000
- 28 Active Marine Farm Sites
- 17 Lease Holders
- Four Major Companies

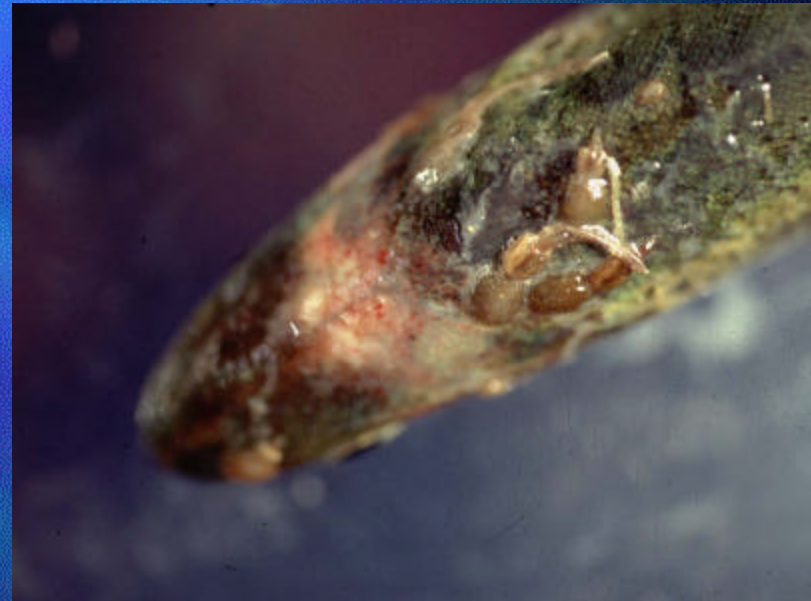
General Activities



- Routine Diagnostics
- ISAv Surveillance
- Maine Fish Health Technical Committee

Sea Lice Integrated Pest Management Program

- Organize Sea Lice Task Force
- Establish Coordinated Monitoring Program
- Implement FDA INAD Study for Controlling Parasite



Sea Lice Task Force



- Representatives from all salmon companies.
- Guidelines for IPMP established.

Sea Lice Monitoring



- Train farm personnel to i.d. infective life stages
- Report findings on bi-weekly basis.
- Coordinate data base and report back to farmers

Investigational New Animal Drug Study for EXCIS Cypermethrin

- Hold Annual Training Workshop for safe use and reporting
- Coordinate Distribution of Drug
- Conduct studies on Efficacy and safety to non-target animals



Outcomes and Assessment of Impacts

- Nine companies participated at 22 farm sites.
- 25-40 annually trained in monitoring and INAD protocols.
- Monitoring and treatment strategies implemented by participating farms
- Provide FDA with information for drug approval



New England Farmed Fish Health Workshop

9th Annual



SPONSORED BY:

University of Maine Cooperative Extension
Maine Sea Grant College Program
Northeastern Regional Aquaculture Center
Maine Aquaculture Innovation Center
Maine Aquaculture Association