



Community Resilience Assessment: Insights from East Boston

Courtney Humphries, Kimberly Starbuck, and John Duff JD, LL.M

- Which community?
- What the heck is resilience?
- How do you assess it?

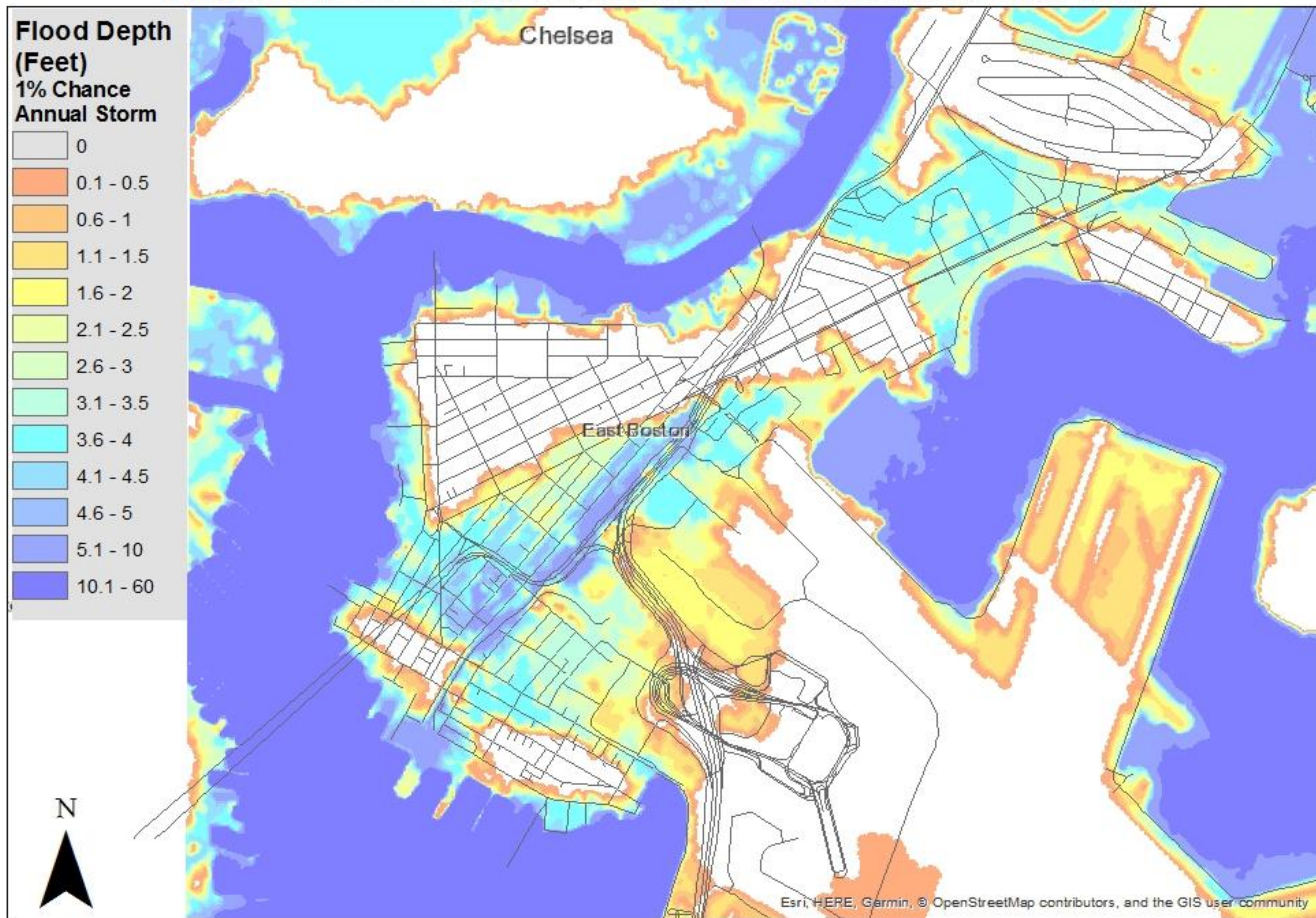


Source: Goran tek-en, CC BY-SA 4.0

Indicator	East Boston	Boston (all)
Total population	46,208	658,279
Median household income (2015)	\$52,733	\$58,769
Residents with bachelor's degree	22.3%	46.4%
Households that are families	59.1%	47.9%
Residents 16 or older in labor force	75.0%	68.0%
Commute by public transportation	56.0%	32.7%
Residents who are not US citizens	39.1%	14.5%
Residents who are Hispanic	57.7%	19.0%
% of renter-occupied units	72.0%	65.3%
Poverty rate	19.2%	21.1%



100-year Storm Flooding in East Boston with 3 Feet Sea Level Rise



Flood map data source: Metropolitan Area Planning Council



Photo credits: (Above) East Boston Times-Free Press;



Photo credits: (Above) East Boston Times-Free Press;



Boston Water and Sewer Commission

	Infrastructural	Social	Environmental
Risks			
Resources			
Roles			
Responsibilities			

	Infrastructural	Social	Environmental
Risks	Flooding of subway and bus routes and evacuation roads, downed utility lines, clogged sewers, aging buildings		
Resources	Energy and transportation assets; public and private investment in development		
Roles	Landlords, homeowners, developers, City of Boston, state agencies, utilities		
Responsibilities	Duty to protect, repair, maintain, and communicate about conditions of buildings and infrastructure		

	Infrastructural	Social	Environmental
Risks	Flooding of subway and bus routes and evacuation roads, downed utility lines, clogged sewers, aging buildings	Lack of investment in East Boston, language barriers, financial vulnerability, lack of emergency preparedness, high renter occupancy	
Resources	Energy and transportation assets; public and private investment in development	Strong neighborhood identity, families, community groups, communication plans	
Roles	Landlords, homeowners, developers, City of Boston, state agencies, utilities	Residents as first responders, civic organizations as information hubs, city outreach and planning	
Responsibilities	Duty to protect, repair, maintain, and communicate about conditions of buildings and infrastructure	Social and legal duties of parents, custodians, and neighbors; city and state duties to vulnerable populations	

	Infrastructural	Social	Environmental
Risks	Flooding of subway and bus routes and evacuation roads, downed utility lines, clogged sewers, aging buildings	Lack of investment in East Boston, language barriers, financial vulnerability, lack of emergency preparedness, high renter occupancy	Sea level rise, tidal and storm-surge flooding, freshwater flooding, shoreline erosion, industrial pollution, marine debris
Resources	Energy and transportation assets; public and private investment in development	Strong neighborhood identity, families, community groups, communication plans	Ongoing city climate adaptation planning, state and federal pollution control regulations, activism
Roles	Landlords, homeowners, developers, City of Boston, state agencies, utilities	Residents as first responders, civic organizations as information hubs, city outreach and planning	Community and environmental NGOs; city, state and federal oversight agencies
Responsibilities	Duty to protect, repair, maintain, and communicate about conditions of buildings and infrastructure	Social and legal duties of parents, custodians, and neighbors; city and state duties to vulnerable populations	Duty to measure, forecast, and regulate environmental conditions; maintain ecosystem services

	Infrastructural	Social	Environmental
Risks	Flooding of subway and bus routes and evacuation roads, downed utility lines, clogged sewers, aging buildings	Lack of investment in East Boston, language barriers, financial vulnerability, lack of emergency preparedness, high renter occupancy	Sea level rise, tidal and storm-surge flooding, freshwater flooding, shoreline erosion, industrial pollution, marine debris
Resources	Energy and transportation assets; public and private investment in development	Strong neighborhood identity, families, community groups, communication plans	Ongoing city climate adaptation planning, state and federal pollution control regulations, activism
Roles	Landlords, homeowners, developers, City of Boston, state agencies, utilities	Residents as first responders, civic organizations as information hubs, city outreach and planning	Community and environmental NGOs; city state and federal oversight agencies
Responsibilities	Duty to protect, repair, maintain, and communicate about conditions of buildings and infrastructure	Social and legal duties of parents, custodians, and neighbors; city and state duties to vulnerable populations	Duty to measure, forecast, and regulate environmental conditions; maintain ecosystem services

Exposure



COCA

Coastal and Ocean Climate Applications



UMASS BOSTON

